

TeamHealth Delivered Exceptional Care When It Mattered Most

Hurricanes Helene and Milton devastated communities across the Southeast. Tens of thousands suffered extensive medical injuries, and hundreds tragically lost their lives.

TeamHealth is defined by the minutes, hours, or days one of our clinicians serves a patient.

Most patients never choose to be in one of our emergency departments or treated by one of our more than 14,000 clinicians. This is especially true in the aftermath of sudden and devastating storms when communities were cut off from supplies and residents desperately needed medical care.

TeamHealth has a strong presence in the rural and underserved communities impacted by the storms - our clinicians worked tirelessly and selflessly to deliver exceptional care during these pivotal moments



75

TeamHealth emergency and hospital medicine clinicians traveled to assist the affected communities.



5,800

TeamHealth physicians care for approximately 5.8 million patients annually in the states hardest hit by Hurricanes Helene and Milton.

\$15,000

was raised by TeamHealth for the American Red Cross in response to Hurricane Helene.

Mission Hospital (NC):

Our clinicians treated nearly 600 patients in a day in the storm's immediate aftermath—more than 118% above normal levels. Within a week, TeamHealth helped to reopen all levels of care at the hospital despite extensive damage and a lack of water access.



600

patients in a day

USA TODAY



'They didn't leave:' ER staff worked for days on end to help Helene victims



THE TENNESSEAN

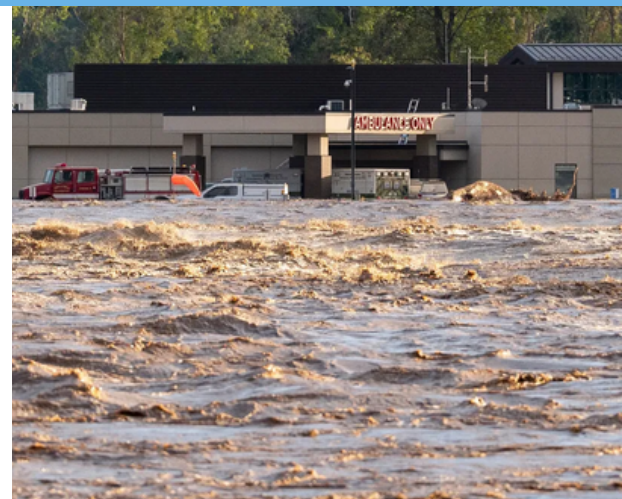
Inside the rescue at Tennessee hospital struck by Helene: 'You are getting off that roof'

Johnson City Medical Center (TN):

Our team swiftly responded when a nearby hospital in the same health system was suddenly inundated with floodwaters from a rising river. After 11 patients were evacuated from the roof, our team welcomed and treated them, providing them a safe place to continue their recovery.



From the high school, ambulances and helicopters ferried the 10 patients and hospital staff member injured by a car to Johnson City Medical Center, a regional hub. [TeamHealth] Dr. Ben Aimua, the hospital's assistant facility medical director, quickly worked to discharge patients to make room for the evacuees."



Rutherford Regional Health System (NC):

TeamHealth clinicians cared for 100 patients in one day, with no power, water, or communication at the only hospital in Rutherford County. TeamHealth set up a temporary care unit powered by a generator at a local school for more than 40 patients dependent on oxygen and seeking refuge in the emergency department.

Post-Acute Care:

Our Post-Acute Care team supported the evacuation of 17 skilled nursing and assisted living facilities before the storm.

Brookdale Senior Living Care:

TeamHealth clinicians provided Brookdale, the nation's largest retirement home provider, who is not a TeamHealth client, a 24-hour emergent telephonic and telemedicine support service needed to connect over 1,000 displaced patients with a care provider.

Tampa General Hospital (FL):

TeamHealth secured lodging for displaced physicians to keep care running smoothly when Hurricane Milton landed near Tampa.



17

skilled nursing and assisted living facilities evacuated



TeamHealth's Frontline Healthcare Heroes:

“I never dreamed that our team would have to navigate a hurricane in the mountains, and we could not have done this without the support and love from TeamHealth.”

– Dr. Caroline Kahle (Mission Hospital, NC)

“A lot of the emergency room staff, nurses, the doctors, respiratory therapists and techs, everybody, we're all in the same boat. We all have families. We all have houses. Many people had damage to their houses, and a lot of people who were here when it initially hit, didn't leave the hospital for days.”

– Dr. Matt Riester (Mission Hospital, NC)



Stirling Barlow, NP (Mission Hospital, NC), was airlifted into a nearby hospital cut off from road access as the facility needed additional caregivers in the aftermath of the storm.

Thai Swanson, NP (Post-Acute Care, North Carolina Mountains Group), rode a dirt bike through hurricane-hit terrain to treat patients.

Sabrina Reed, NP (Post-Acute Care, North Carolina Mountains Group), cared for patients without hesitation despite losing her own home in the storm.

LeeAnn Canady, PA-C, and Jo Ellen Inman-Puckett, NP (Post-Acute Care, North Carolina Mountains Group), coordinated aid to their skilled nursing facility partner in Spruce Pine, North Carolina, including arranging for a biomedical engineer to install a generator for essential medical devices.